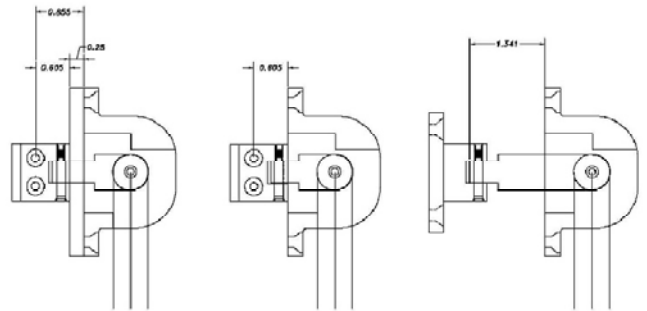


Harwick Architectural Hardware Co. LLC



Harwick flat bar pushbar for metal awning, casement and wood windows.



<p>Backset for metal window with ¼" screen</p>	<p>Backset for metal window no screen</p>	<p>Backset for wood window 2 1/16" trim</p>
------------------------------------------------------------	-------------------------------------------------------	-----------------------------------------------------

Harwick Architectural Hardware co LLC.

Push-Bars

Harwick casement and awning pushbars are not safety devices. If there is a need for a safety device, an added safety device should be installed by the hardware installer or window manufacturer to comply with, ASTM F2090 compliant window safety limiters,

Do not allow children to pull, swing, or lean on the sash of the casement/awning window. This could cause the sash to come loose from the window frame, damage the hinges, and destroy the operator mechanisms, resulting in potential injury or product.

To prevent bending pushbar arms, or links, do not force the operator bar. If the window is difficult to open or close, check for binding hinges or obstructions. Forcing a locked window or continuing to push the bar after the sash is fully extended can break the push bar.

Routine lubrication of the sash hinges and operator mechanism is required. Failure to maintain proper lubrication may result in increased pressure on the operator, causing premature wear, or binding causing broken parts and the operator can come loose from the frame.

Harwick architectural Hardware assumes no liability for damages resulting from the misuse or unexpected performance of or pushbars. Our warrantee applies to parts only.

Our pushbars are sold as is. no fitness for a specific purpose or application is guaranteed or implied.